



## Active Cool-Container: Heating & Cooling System Unicooler – RKN (LD3)

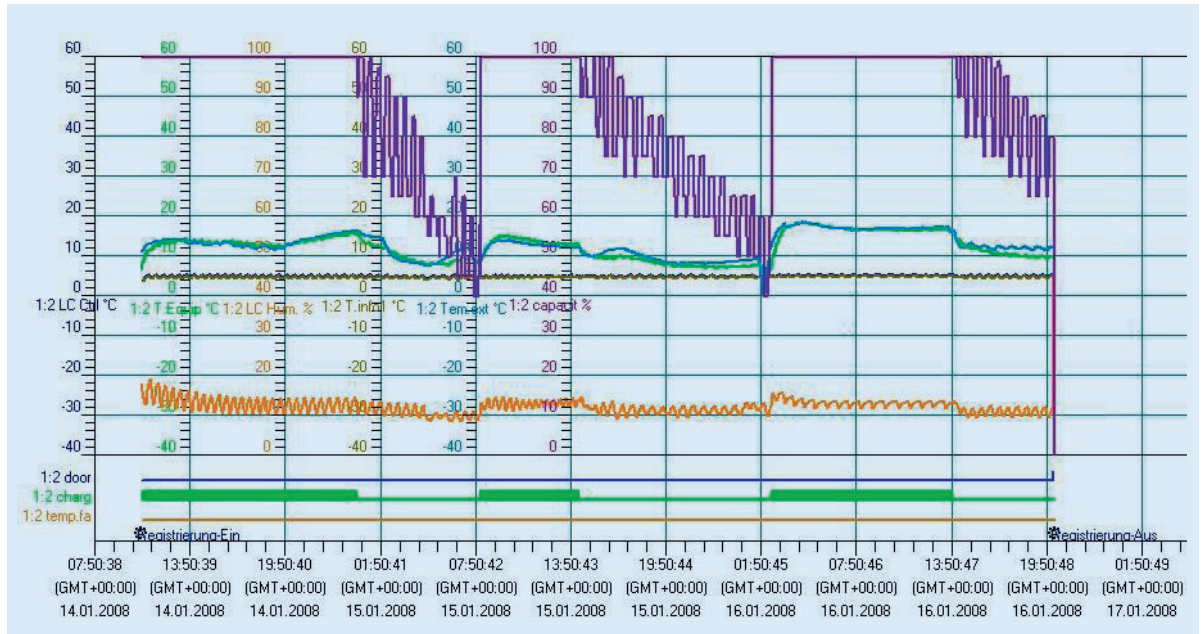
The Unicooler, the new highly-developed air cargo container with a sophisticated ventilation system and integral large rechargeable accumulators, regulates the temperatures within the cargo compartment of the unit by using dry ice (concealed in separate dry ice bunker) as cooling energy source in combination with an electrical heating and permanent air circulation.

The system is driven by an external temperature sensor and additional internal temperature sensors for the freight compartment in order to maintain the required temperature range.

<b>Technical specification:</b>		
Internal temperature range settings	-20 °C to +30 °C	-4 °F to +86 °F
External dimensions (L x W x H)	2002 x 1534 x 1624 mm	79 x 60 x 64 in
Internal dimensions (L x W x H)	1302 x 1265 x 1302 mm	51 x 50 x 51 in
Max. internal loading dimensions for freight (L x W x H)	1220 x 1180 x 1170 mm	47 x 46 x 40 in
Effective loading volume (m <sup>3</sup> /cu.ft)	1,65 m <sup>3</sup>	49 cu.ft
Max. ICE bunker capacity (when using block ice)	120 kg	265 lbs
Tare weight	444 kg	979 lbs
Max. gross weight (incl. dry ice)	1588 kg	3501 lbs
Max. net weight	1144 kg	2522 lbs
Power supply	Operated by 12 / 24 V airworthy accumulators Ground system: 110 / 220 V connector	
Accumulator loading time (from 0 to 100 %)	Approx. 8 hrs	
Autonomous running time	Approx. 120 hrs	
Data recording	Continuous recording of operation data	

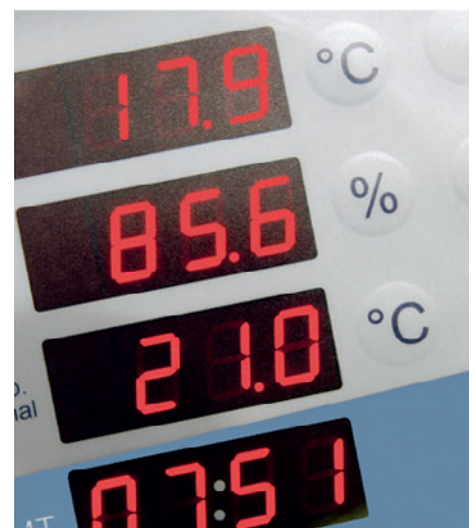


## Data Recording: Unicooler – RKN (LD3)



### Continuous recording of operational data such as:

- Start and stop of operations
- Internal temperature
- Ambient temperature
- Temperature out of range during operation
- Internal humidity
- Opening of doors during transportation
- Power supply and battery charging times



### Contact information:

If you require more information on Lufthansa Cargo's temperature-sensitive services please contact your Lufthansa Cargo office, or visit us in the internet at [www.lufthansa-cargo.com](http://www.lufthansa-cargo.com)